

SECTION II

TM9-2320-273-24P

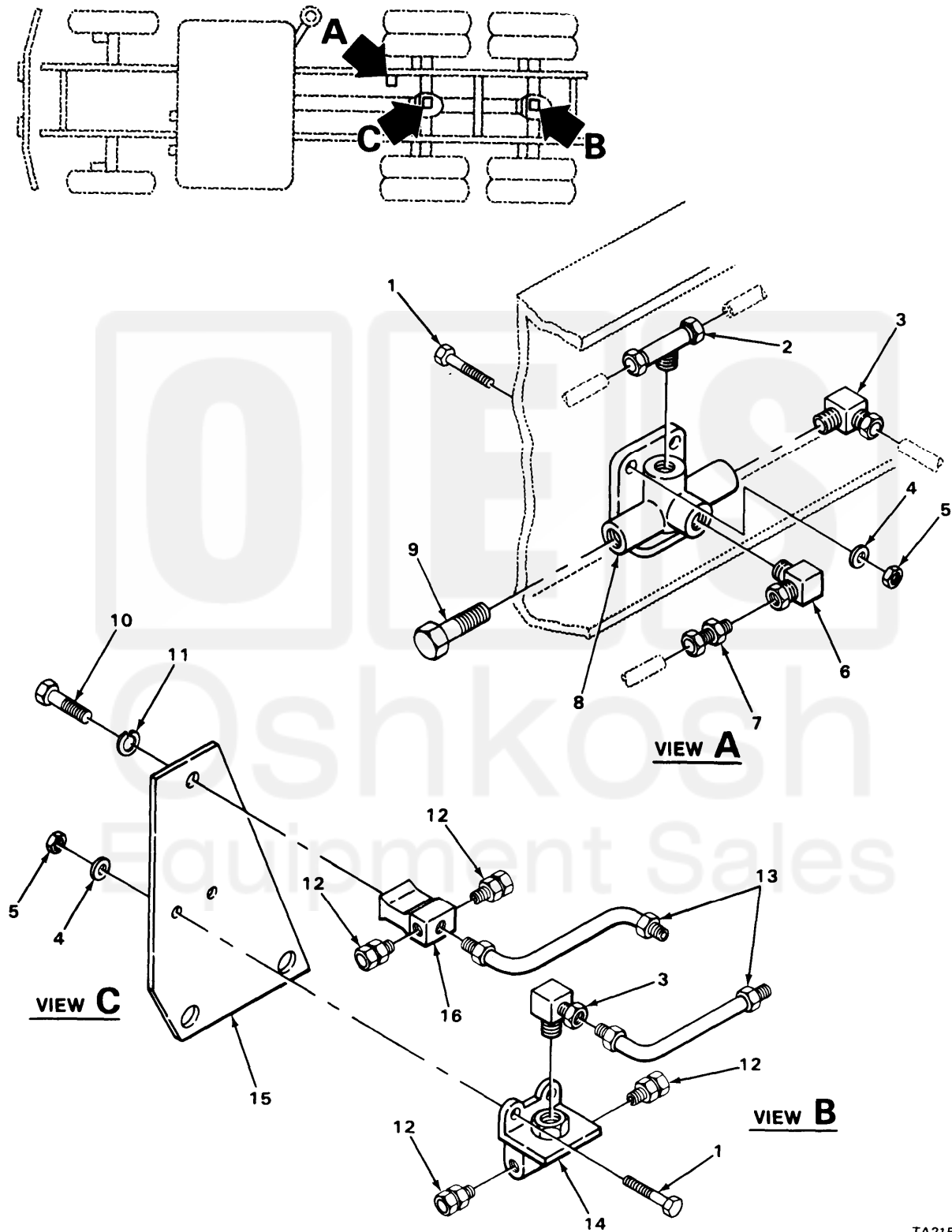


FIGURE 127. FRONT QUICK RELEASE VALVE (MODEL M915).

TA215506

Current part is item (8,7,5) on diagram. Available at www.oshkoshequipment.com

SECTION (1)	II (2)		TM9-2320-273-24P (4)	(5)	(6)
ITEM NO	SMR CODE	FSCM	PART NUMBER	DESCRIPTION AND USABLE ON CODE (UOC)	QTY
GROUP:1208 AIR BRAKE SYSTEM					
FIGURE 127. FRONT QUICK RELEASE VALVE (MODEL 915).					
1	PAOZZ	24617	9418918	SCREW,CAP,HEXAGON UOC:U21	4
2	PAOZZ	93061	272NTA-4-4	TEE UOC:U21	1
3	PAOZZ	96906	MS39162-7	ELBOW UOC:U21	2
4	PAOZZ	24617	2436162	WASHER,FLAT UOC:U21	4
5	PAOZZ	24617	9422295	NUT,SELF-LOCKING,CO. UOC:U21	4
6	PAOZZ	81343	6-4 120202BA(LONG NUT)	ELBOW UOC:U21,U24	1
7	PAOZZ	79470	1468X10X6	ADAPTER,STRAIGHT,PI MALE UOC:U21	1
8	PAOZZ	06853	289714	VALVE,QUICK RELEASE WITH DOUBLE CHECK UOC:U21	1
9	PAOZZ	24617	444626	PLUG,PIPE UOC:U21	1
10	PAOZZ	24617	9424338	BOLT,MACHINE UOC:U21	1
11	PAOZZ	24617	9419871	WASHER,LOCK UOC:U21	1
12	PAOZZ	93061	68NTA-8-6	ADAPTER,STRAIGHT,PI UOC:U21	4
13	PAOZZ	34623	M/145-20022	HOSE ASSEMBLY,NONME UOC:U21	2
14	PAOZZ	06853	229859	VALVE,SAFETY RELIEF UOC:U21	1
15	PBOZZ	34623	MB242A-20150	BRACKET,MOUNTING UOC:U21	1
16	PAOZZ	78330	4003	TEE,AIR LINE UOC:U21	1
END OF FIGURE					



Current part is item (8,7,5) on diagram. Available at www.oshkoshequipment.com

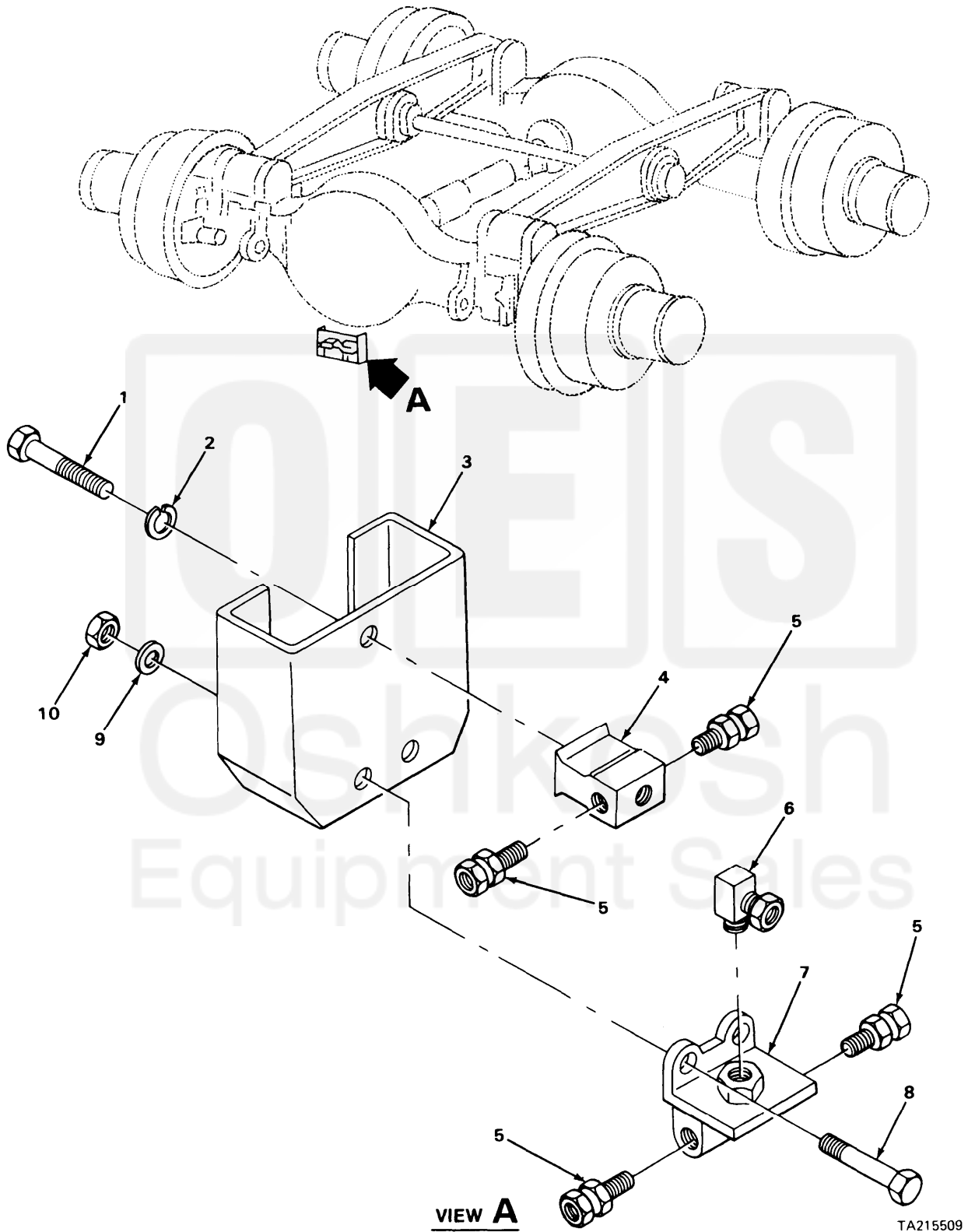


FIGURE 130. REAR QUICK RELEASE VALVE (MODEL M915).

Current part is item (8,7,5) on diagram. Available at www.oshkoshequipment.com

SECTION II (1)	ITEM (2)	(3)	TM9-2320-273-24P (4)	(5)	(6)
NO	SMR CODE	FSCM	PART NUMBER	DESCRIPTION AND USABLE ON CODE (UOC)	QTY
				GROUP:1208 AIR BRAKE SYSTEM	
				FIGURE 130. REAR QUICK RELEASE VALVE (MODEL M915).	
1	PAOZZ	24617	9420462	SCREW,CAP,HEXAGON UOC:U21	1
2	PAOZZ	24617	9419871	WASHER,LOCK UOC:U21	1
3	PBOZZ	34623	MC32-20076	BRACKET,VALVE MOUNT UOC:U21	1
4	PAOZZ	78330	4003	TEE,AIR LINE UOC:U21	1
5	PAOZZ	93061	68NTA-8-6	ADAPTER,STRAIGHT,PI UOC:U21	4
6	PAOZZ	96906	MS39162-7	ELBOW UOC:U21	1
7	PAOZZ	06853	289714	VALVE,QUICK RELEASE UOC:U21	1
8	PAOZZ	24617	9418918	SCREW,CAP,HEXAGON UOC:U21	2
9	PAOZZ	24617	2436162	WASHER,FLAT UOC:U21	2
10	PAOZZ	24617	9422295	NUT,SELF-LOCKING,CO UOC:U21	2

END OF FIGURE



Current part is item (8,7,5) on diagram. Available at www.oshkoshequipment.com

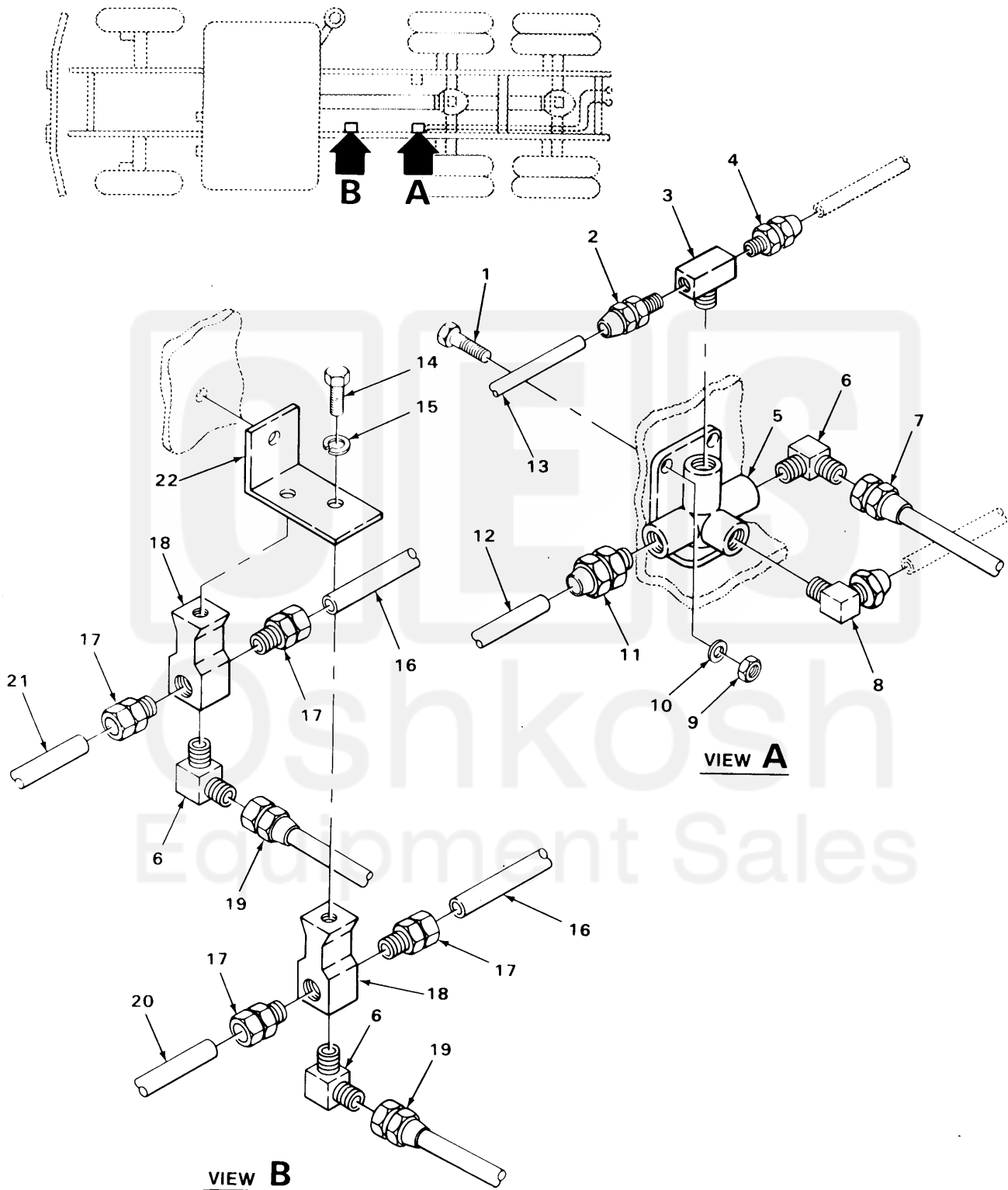


FIGURE 148. FRONT QUICK RELEASE VALVE (MODELS M916 AND M918).

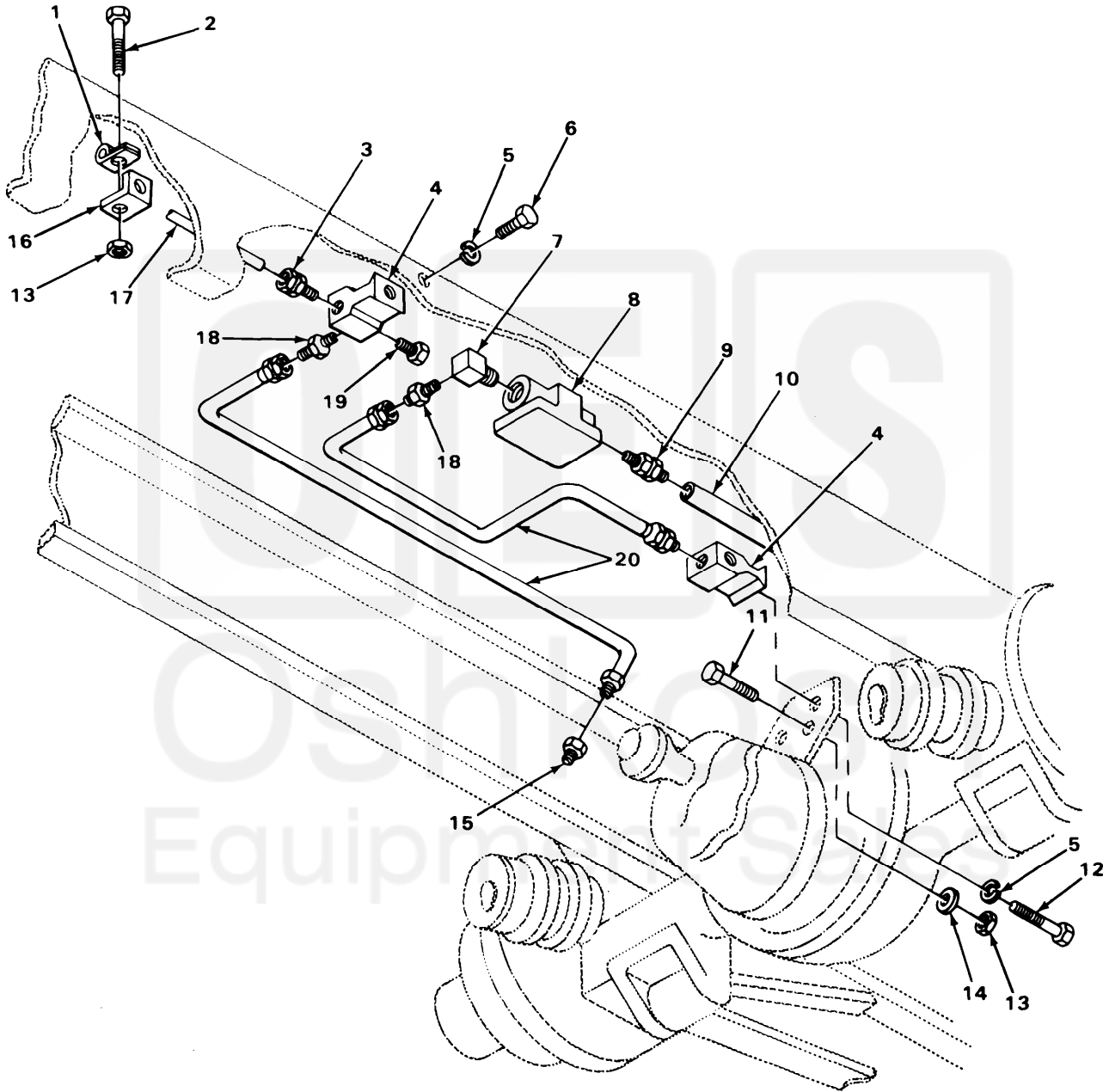
TA215527

Current part is item (8,7,5) on diagram. Available at www.oshkoshequipment.com

SECTION II (1)	ITEM (2)	SMR (3)	FSCM (4)	TM9-2320-273-24P PART NUMBER	(5)	DESCRIPTION AND USABLE ON CODE (UOC)	(6)	QTY
GROUP:1208 AIR BRAKE SYSTEM								
FIGURE 148. FRONT QUICK RELEASE VALVE (MODELS M916 AND M918).								
1	PAOZZ	24617	9418918			SCREW,CAP,HEXAGON UOC:U22,U24		2
2	PAOZZ	93061	68NTA-4-4			ADAPTER,STRAIGHT,PI UOC:U22,U24		1
3	PAOZZ	24617	444134			TEE,PIPE UOC:U22,U24		1
4	PAOZZ	93061	68NTA-8-4			ADAPTER,STRAIGHT,PI UOC:U22,U24		1
5	PAOZZ	06853	289714			VALVE,QUICK RELEASE WITH DOUBLE CHECK UOC:U22,U24		1
6	PAOZZ	96906	MS39162-7			ELBOW UOC:U22,U24		3
7	PAOZZ	34623	M/145-20022			HOSE ASSEMBLY,NONME UOC:U22,U24		1
8	PAOZZ	81343	6-4 120202BA(LONG NUT)			ELBOW UOC:U22,U24		1
9	PAOZZ	24617	9422295			NUT,SELF-LOCKING,CO UOC:U22,U24		2
10	PAOZZ	24617	2436162			WASHER,FLAT UOC:U22,U24		2
11	PAOZZ	93061	68NTA-8-6			ADAPTER,STRAIGHT,PI UOC:U22,U24		1
12	MOOZZ	34623	M/357-20113			TUBE,NONMETALLIC MAKE FROM P/N 0608 UOC:U22,U24		1
13	MOOZZ	34623	M/357-20099			TUBE,NONMETALLIC MAKE FROM P/N CPR104420-1 UOC:U22,U24		1
14	PAOZZ	24617	9424338			BOLT,MACHINE UOC:U22,U24		2
15	PAOZZ	24617	9419871			WASHER,LOCK UOC:U22,U24		2
16	MOOZZ	34623	M/357-20127			HOSE,NONMETALLIC MAKE FROM P/N 246115 UOC:U22,U24		2
17	PAOZZ	93061	68NTA-6-6			ADAPTER,STRAIGHT,PI UOC:U22		4
18	PAOZZ	78330	4003			TEE,AIR LINE UOC:U22,U24		2
19	PAOZZ	79146	0220060			HOSE ASSEMBLY,NONME UOC:U22		2
20	MOOZZ	34623	M/357-20129			TUBE,NONMETALLIC MAKE FROM P/N 246115 UOC:U22,U24		1
21	MOOZZ	34623	M/357-20130			TUBE,NONMETALLIC MAKE FROM P/N 246115 UOC:U22,U24		1

Current part is item (8,7,5) on diagram. Available at www.oshkoshequipment.com

SECTION II



TA215530

FIGURE 151. REAR QUICK RELEASE VALVE (MODELS M916 AND M918).

Current part is item (8,7,5) on diagram. Available at www.oshkoshequipment.com

SECTION II (1)	ITEM (2)	(3)	TM9-2320-273-24P (4)	(5)	(6)
NO	SMR CODE	FSCM	PART NUMBER	DESCRIPTION AND USABLE ON CODE (UOC)	QTY
GROUP:1208 AIR BRAKE SYSTEM					
FIGURE 151. REAR QUICK RELEASE VALVE (MODELS M916 AND M918).					
1	PAOZZ	75272	COV-2509	CLAMP, LOOP UOC: U22, U24	1
2	PAOZZ	96906	MS90725-33	BOLT, MACHINE UOC: U22, U24	1
3	PAOZZ	93061	68NTA-4-6	ADAPTER, STRAIGHT, PI UOC: U22, U24	1
4	PAOZZ	78330	4003	TEE, AIR LINE UOC: U22, U24	2
5	PAOZZ	24617	9419871	WASHER, LOCK UOC: U22, U24	2
6	PAOZZX	24617	9421235	SCREW, CAP, HEXAGON UOC: U22, U24	1
7	PAOZZ	96906	MS39162-7	ELBOW UOC: U22, U24	1
8	PAOZZ	06853	289714	VALVE, QUICK RELEASE UOC: U22, U24	1
9	PAOZZ	93061	68NTA-8-6	ADAPTER, STRAIGHT, PI UOC: U22, U24	1
10	MOOZZ	34623	M/357-20113	TUBING, NONMETALLIC MAKE FROM P/N C608 UOC: U22, U24	1
11	PAOZZ	24617	9418918	SCREW, CAP, HEXAGON UOC: U22, U24	1
12	PAOZZ	24617	9424338	BOLT, MACHINE UOC: U22, U24	1
13	PAOZZ	24617	9422295	NUT, SELF-LOCKING, CO UOC: U22, U24	2
14	PAOZZ	24617	2436162	WASHER, FLAT UOC: U22, U24	1
15	PAOZZ	96906	MS39158-29	ADAPTER, STRAIGHT, PI MALE UOC: U22, U24	1
16	PAOZZ	34623	MB10-20093	BRACKET UOC: U22, U24	1
17	MOOZZ	19207	0587213-1	TUBE, NONMETALLIC MAKE FROM P/N CPR104420-1 UOC: U22, U24	1
18	PAOZZ	96906	MS39158-7	ADAPTER, STRAIGHT, PI UOC: U22, U24	2
19	PAOZZ	24617	444626	PLUG, PIPE UOC: U22, U24	1
20	PAOZZ	34623	M/145-20022	HOSE ASSEMBLY, NONME UOC: U22, U24	2

END OF FIGURE

151-1

Current part is item (8,7,5) on diagram. Available at www.oshkoshequipment.com